

Totally Integrated Automation Portal				
<div><div>PorologPM6-HMI [KTP700 Basic PN]</div><div><div>PorologPM6-HMI</div><div>General</div><table><tr><td>Name</td><td>PorologPM6-HMI</td></tr></table></div></div>			Name	PorologPM6-HMI
Name	PorologPM6-HMI			

Totally Integrated Automation Portal			
--------------------------------------	--	--	--

PorologPM6-HMI [KTP700 Basic PN]

Runtime settings

General

Start screen	10_Hlavni_obrazovka	Default template	
Default style of the project	Enabled	Style of the HMI device	WinCC Dark V 1.0.1
Adapt font size to style	Enabled	Screen resolution	800, 480
Project ID	0	Logging language	Startup language

Services

Sm@rtAccess or service: start Sm@rtServer	Disabled
---	----------

Screens

Bit selection for text and graphic lists	Off	User-defined pictogram size	Disabled
X,Y:	72, 51	Scrolling mode	Scroll bar

Keyboard

Use screen keyboard	Enabled	Release button on exit	Disabled
Disable dialog window function keys	Disabled		

Alarms

Controller alarms

Buffer overflow	10 %	Acknowledgment group text	QGR
Use alarm class color	Disabled	Use help texts for system diagnostics	Enabled
System event duration	2 Seconds	PersistentAlarmBuffer	Enabled
Connection	HMI_Connection_1		

User administration

Enable limit for logon attempts	Enabled	Invalid logon attempts	3
Logon with password	Disabled	Group-specific rights	Disabled
Password aging	Disabled	Validity period	90
Warning period	7	Password generations	3
At least one special character	Disabled	At least one number	Disabled
Minimum password length	3		

Language & font

Preset runtime language	English (United States)
-------------------------	-------------------------

English (United States)

Runtime language	Enabled	Fixed font 1	Tahoma
Default font	Tahoma, 11 Pixel	Configured font 1	

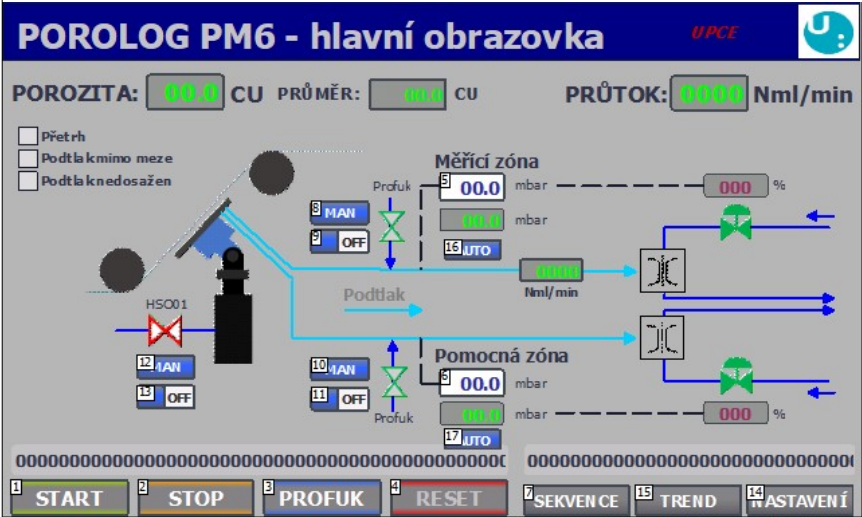
--	--	--

Totally Integrated Automation Portal			
<b>Tag settings</b>			
Replace the separators on each sub-level of the path of the PLC tag:	Enabled	Compatibility mode: Set '_' between the PLC tags and the first-level element.	Disabled
Replace the '.' character if the name of the HMI tag is created from the PLC tag name	Enabled	Use '_' as the replacement character	Enabled
Use ';' as the replacement character	Disabled	Replace the characters '[' and ']' if the name of the HMI tag is created from the PLC tag name	Enabled
Use '{' and '}' as replacement characters	Enabled	Use '(' and ')' as replacement characters	Disabled
<b>Settings for the prefix 'PLC' in the HMI tag name</b>			
Connection	HMI_Connection_1	PLC name as prefix in the HMI tag name	Disabled

# PorologPM6-HMI [KTP700 Basic PN] / Screens

## 10\_Hlavni\_obrazovka

Hardcopy of 10\_Hlavni\_obrazovka



Name	10_Hlavni_obrazovka	Background color	181, 182, 181
Grid color	0, 0, 0	Number	1
Template		Tooltip	

### Button\_1

Type	Button	Name	Button_1
X position	8	Y position	445
Width	110	Height	35
Mode	Text	Text OFF	START
Text ON	Text		

### Dynamizations\Event

Event name	Press
------------	-------

### Function list\SetBit

Tag	Porolog_TL_START
-----	------------------

### Dynamizations\Event

Event name	Release
------------	---------

### Function list\ResetBit

Tag	Porolog_TL_START
-----	------------------

Totally Integrated Automation Portal			
Button_2			
Type	Button	Name	Button_2
X position	126	Y position	445
Width	109	Height	35
Mode	Text	Text OFF	STOP
Text ON	Text		
Dynamizations\Event			
Event name		Press	
Function list\SetBit			
Tag		Porolog_TL_STOP	
Dynamizations\Event			
Event name		Release	
Function list\ResetBit			
Tag		Porolog_TL_STOP	
Button_3			
Type	Button	Name	Button_3
X position	243	Y position	445
Width	110	Height	35
Mode	Text	Text OFF	PROFUK
Text ON	Text		
Dynamizations\Event			
Event name		Press	
Function list\SetBit			
Tag		Porolog_TL_PROFUK	
Dynamizations\Event			
Event name		Release	
Function list\ResetBit			
Tag		Porolog_TL_PROFUK	
Button_4			
Type	Button	Name	Button_4
X position	361	Y position	445
Width	110	Height	35
Mode	Text	Text OFF	RESET
Text ON	Text		
Dynamizations\Event			
Event name		Press	
Function list\SetBit			
Tag		Porolog_TL_RESET	
Dynamizations\Event			
Event name		Release	

Totally Integrated Automation Portal			
Function list\ResetBit			
Tag	Porolog_TL_RESET		
Rectangle_1			
Type	Rectangle	Name	Rectangle_1
X position	0	Y position	0
Width	799	Height	55
Layer	0 - Layer_0	Background color	0, 0, 132
Border color	24, 28, 49		
Text field_3			
Type	Text field	Name	Text field_3
X position	11	Y position	9
Width	551	Height	43
Layer	0 - Layer_0	Font	Tahoma, 32px, style=Bold
Text	POROLOG PM6 - hlavní obrazovka		
Graphic view_2			
Type	Graphic view	Name	Graphic view_2
X position	741	Y position	3
Width	57	Height	50
Layer	0 - Layer_0	Graphic	upce-fei-logo_2
Fit graphic to size	Stretch graphic		
Text field_2			
Type	Text field	Name	Text field_2
X position	6	Y position	69
Width	124	Height	29
Layer	0 - Layer_0	Font	Tahoma, 21px, style=Bold
Text	POROZITA:		
I/O field_1			
Type	I/O field	Name	I/O field_1
X position	134	Y position	67
Width	73	Height	34
Layer	0 - Layer_0	Mode	Output
Font	Tahoma, 23px, style=Bold		
Dynamizations\Tag connection			
Property name	Process value	Tag	Porolog_Vypoctena_prodysnost
Text field_4			
Type	Text field	Name	Text field_4
X position	210	Y position	70
Width	35	Height	29
Layer	0 - Layer_0	Font	Tahoma, 21px, style=Bold
Text	CU		
Text field_5			
Type	Text field	Name	Text field_5
X position	253	Y position	73
Width	82	Height	23
Layer	0 - Layer_0	Font	Tahoma, 16px, style=Bold
Text	PRŮMÉR:		

Totally Integrated Automation Portal			
Text field_6			
Type	Text field	Name	Text field_6
X position	418	Y position	73
Width	28	Height	23
Layer	0 - Layer_0	Font	Tahoma, 16px, style=Bold
Text	CU		
I/O field_2			
Type	I/O field	Name	I/O field_2
X position	341	Y position	71
Width	73	Height	30
Layer	0 - Layer_0	Mode	Output
Font	Tahoma, 16px, style=Bold		
Dynamizations\Tag connection			
Property name	Process value	Tag	Porolog_Prumerna_porozita
Line_1			
Type	Line	Name	Line_1
X position	208	Y position	192
Width	61	Height	56
Layer	0 - Layer_0	Line width	3
Color	0, 207, 255	Background color	255, 255, 255
Line_2			
Type	Line	Name	Line_2
X position	269	Y position	248
Width	320	Height	3
Layer	0 - Layer_0	Line width	3
Color	0, 207, 255	Background color	255, 255, 255
Line_3			
Type	Line	Name	Line_3
X position	204	Y position	196
Width	66	Height	62
Layer	0 - Layer_0	Line width	3
Color	0, 207, 255	Background color	255, 255, 255
Line_4			
Type	Line	Name	Line_4
X position	270	Y position	313
Width	319	Height	0
Layer	0 - Layer_0	Line width	3
Color	0, 207, 255	Background color	255, 255, 255
Line_5			
Type	Line	Name	Line_5
X position	270	Y position	259
Width	0	Height	54
Layer	0 - Layer_0	Line width	3
Color	0, 207, 255	Background color	255, 255, 255
Text field_25			
Type	Text field	Name	Text field_25

Totally Integrated Automation Portal			
--------------------------------------	--	--	--

<b>X position</b>	400	<b>Y position</b>	135
<b>Width</b>	102	<b>Height</b>	25
<b>Layer</b>	0 - Layer_0	<b>Font</b>	Tahoma, 17px, style=Bold
<b>Text</b>	Měřicí zóna		

Line\_6

<b>Type</b>	Line	<b>Name</b>	Line_6
<b>X position</b>	361	<b>Y position</b>	183
<b>Width</b>	0	<b>Height</b>	65
<b>Layer</b>	0 - Layer_0	<b>Line width</b>	2
<b>Color</b>	0, 0, 255	<b>Background color</b>	255, 255, 255

Text field\_26

<b>Type</b>	Text field	<b>Name</b>	Text field_26
<b>X position</b>	400	<b>Y position</b>	317
<b>Width</b>	130	<b>Height</b>	25
<b>Layer</b>	0 - Layer_0	<b>Font</b>	Tahoma, 17px, style=Bold
<b>Text</b>	Pomocná zóna		

Line\_7

<b>Type</b>	Line	<b>Name</b>	Line_7
<b>X position</b>	363	<b>Y position</b>	316
<b>Width</b>	0	<b>Height</b>	65
<b>Layer</b>	0 - Layer_0	<b>Line width</b>	2
<b>Color</b>	0, 0, 255	<b>Background color</b>	255, 255, 255

Text field\_27

<b>Type</b>	Text field	<b>Name</b>	Text field_27
<b>X position</b>	521	<b>Y position</b>	70
<b>Width</b>	102	<b>Height</b>	29
<b>Layer</b>	0 - Layer_0	<b>Font</b>	Tahoma, 21px, style=Bold
<b>Text</b>	PRŮTOK:		

I/O field\_10

<b>Type</b>	I/O field	<b>Name</b>	I/O field_10
<b>X position</b>	622	<b>Y position</b>	68
<b>Width</b>	73	<b>Height</b>	34
<b>Layer</b>	0 - Layer_0	<b>Mode</b>	Output
<b>Font</b>	Tahoma, 23px, style=Bold		

Dynamizations\Tag connection

<b>Property name</b>	Process value	<b>Tag</b>	FI01_DB_Merena_hodnota_ing
----------------------	---------------	------------	----------------------------

Text field\_28

<b>Type</b>	Text field	<b>Name</b>	Text field_28
<b>X position</b>	696	<b>Y position</b>	71
<b>Width</b>	98	<b>Height</b>	29
<b>Layer</b>	0 - Layer_0	<b>Font</b>	Tahoma, 21px, style=Bold
<b>Text</b>	Nml/min		

I/O field\_11

<b>Type</b>	I/O field	<b>Name</b>	I/O field_11
<b>X position</b>	407	<b>Y position</b>	159
<b>Width</b>	61	<b>Height</b>	27
<b>Layer</b>	0 - Layer_0	<b>Mode</b>	Input



Totally Integrated Automation Portal			
--------------------------------------	--	--	--

Font	Tahoma, 17px, style=Bold		
Dynamizations\Tag connection			
Property name	Process value	Tag	PIC01_DB_Setpoit_PID
Text field_21			
Type	Text field	Name	Text field_21
X position	474	Y position	160
Width	35	Height	20
Layer	0 - Layer_0	Font	Tahoma, 13px
Text	mbar		
I/O field_12			
Type	I/O field	Name	I/O field_12
X position	407	Y position	192
Width	60	Height	22
Layer	0 - Layer_0	Mode	Output
Font	Tahoma, 16px, style=Bold		
Dynamizations\Tag connection			
Property name	Process value	Tag	PIC01_DB_Merena_hodnota_ing
Text field_22			
Type	Text field	Name	Text field_22
X position	474	Y position	193
Width	35	Height	20
Layer	0 - Layer_0	Font	Tahoma, 13px
Text	mbar		
I/O field_13			
Type	I/O field	Name	I/O field_13
X position	407	Y position	342
Width	61	Height	27
Layer	0 - Layer_0	Mode	Input
Font	Tahoma, 17px, style=Bold		
Dynamizations\Tag connection			
Property name	Process value	Tag	PIC02_DB_Setpoit_PID
Text field_29			
Type	Text field	Name	Text field_29
X position	474	Y position	345
Width	35	Height	20
Layer	0 - Layer_0	Font	Tahoma, 13px
Text	mbar		
I/O field_14			
Type	I/O field	Name	I/O field_14
X position	407	Y position	373
Width	60	Height	22
Layer	0 - Layer_0	Mode	Output
Font	Tahoma, 16px, style=Bold		
Dynamizations\Tag connection			
Property name	Process value	Tag	PIC02_DB_Merena_hodnota_ing
Text field_30			
Type	Text field	Name	Text field_30

--	--	--

Totally Integrated Automation Portal			
--------------------------------------	--	--	--

X position	474	Y position	374
Width	35	Height	20
Layer	0 - Layer_0	Font	Tahoma, 13px
Text	mbar		

Line\_9

Type	Line	Name	Line_9
X position	106	Y position	306
Width	91	Height	0
Layer	0 - Layer_0	Line width	2
Color	0, 0, 255	Background color	255, 255, 255

I/O field\_15

Type	I/O field	Name	I/O field_15
X position	481	Y position	239
Width	60	Height	22
Layer	0 - Layer_0	Mode	Output
Font	Tahoma, 16px, style=Bold		

Dynamizations\Tag connection

Property name	Process value	Tag	FI01_DB_Merena_hodnota_ing
---------------	---------------	-----	----------------------------

Text field\_31

Type	Text field	Name	Text field_31
X position	483	Y position	261
Width	56	Height	18
Layer	0 - Layer_0	Font	Tahoma, 12px, style=Bold
Text	Nml/min		

Graphic view\_3

Type	Graphic view	Name	Graphic view_3
X position	349	Y position	194
Width	26	Height	30
Layer	0 - Layer_0	Graphic	Graphic_15
Fit graphic to size	Stretch graphic		

Dynamizations\Visibility

Tag - Cycle	OS01_OPN -	Data type	Range
Start range	1	End range	1
Visibility	Visible		

Button\_5

Type	Button	Name	Button_5
X position	485	Y position	450
Width	100	Height	30
Mode	Text	Text OFF	SEKVENCE
Text ON	Text		

Dynamizations\Event

Event name	Click
------------	-------

Function list\ActivateScreen

Screen name	30_Sekvence	Object number	0
-------------	-------------	---------------	---

Switch\_1

Type	Switch	Name	Switch_1
------	--------	------	----------

--	--	--

Totally Integrated Automation Portal			
--------------------------------------	--	--	--

X position	287	Y position	185
Width	55	Height	23
Layer	0 - Layer_0	Mode	Switch with text
Dynamizations\Tag connection			
Property name	Process value	Tag	Ventily_DB_OS01_Man/Auto

Switch\_2

Type	Switch	Name	Switch_2
X position	287	Y position	212
Width	55	Height	23
Layer	0 - Layer_0	Mode	Switch
Dynamizations\Tag connection			
Property name	Process value	Tag	Ventily_DB_OS01_Man_CL/OP
Dynamizations\Visibility			
Tag - Cycle	Ventily_DB_OS01_Man/Auto -	Data type	Range
Start range	0	End range	0
Visibility	Visible		

Graphic view\_4

Type	Graphic view	Name	Graphic view_4
X position	349	Y position	194
Width	26	Height	30
Layer	0 - Layer_0	Graphic	Graphic_14
Fit graphic to size	Stretch graphic		
Dynamizations\Visibility			
Tag - Cycle	OS01_OPN -	Data type	Range
Start range	0	End range	0
Visibility	Visible		

Graphic view\_6

Type	Graphic view	Name	Graphic view_6
X position	667	Y position	187
Width	31	Height	36
Layer	0 - Layer_0	Graphic	Graphic_17
Fit graphic to size	Stretch graphic		

Graphic view\_7

Type	Graphic view	Name	Graphic view_7
X position	668	Y position	330
Width	31	Height	36
Layer	0 - Layer_0	Graphic	Graphic_17
Fit graphic to size	Stretch graphic		

I/O field\_16

Type	I/O field	Name	I/O field_16
X position	653	Y position	160
Width	60	Height	22
Layer	0 - Layer_0	Mode	Output
Font	Tahoma, 16px, style=Bold		
Dynamizations\Tag connection			
Property name	Process value	Tag	PIC01_DB_Vystup_PID

Text field\_32

Type	Text field	Name	Text field_32
------	------------	------	---------------

Totally Integrated Automation Portal			
--------------------------------------	--	--	--

<b>X position</b>	714	<b>Y position</b>	161
<b>Width</b>	17	<b>Height</b>	20
<b>Layer</b>	0 - Layer_0	<b>Font</b>	Tahoma, 13px
<b>Text</b>	%		

I/O field\_17

<b>Type</b>	I/O field	<b>Name</b>	I/O field_17
<b>X position</b>	653	<b>Y position</b>	372
<b>Width</b>	60	<b>Height</b>	22
<b>Layer</b>	0 - Layer_0	<b>Mode</b>	Output
<b>Font</b>	Tahoma, 16px, style=Bold		

Dynamizations\Tag connection

<b>Property name</b>	Process value	<b>Tag</b>	PIC02_DB_Vystup_PID
----------------------	---------------	------------	---------------------

Text field\_33

<b>Type</b>	Text field	<b>Name</b>	Text field_33
<b>X position</b>	714	<b>Y position</b>	374
<b>Width</b>	17	<b>Height</b>	20
<b>Layer</b>	0 - Layer_0	<b>Font</b>	Tahoma, 13px
<b>Text</b>	%		

Switch\_3

<b>Type</b>	Switch	<b>Name</b>	Switch_3
<b>X position</b>	287	<b>Y position</b>	331
<b>Width</b>	55	<b>Height</b>	23
<b>Layer</b>	0 - Layer_0	<b>Mode</b>	Switch with text

Dynamizations\Tag connection

<b>Property name</b>	Process value	<b>Tag</b>	Ventily_DB_OS02_Man/Auto
----------------------	---------------	------------	--------------------------

Switch\_4

<b>Type</b>	Switch	<b>Name</b>	Switch_4
<b>X position</b>	287	<b>Y position</b>	359
<b>Width</b>	55	<b>Height</b>	23
<b>Layer</b>	0 - Layer_0	<b>Mode</b>	Switch

Dynamizations\Visibility

<b>Tag - Cycle</b>	Ventily_DB_OS02_Man/Auto -	<b>Data type</b>	Range
<b>Start range</b>	0	<b>End range</b>	0
<b>Visibility</b>	Visible		

Dynamizations\Tag connection

<b>Property name</b>	Process value	<b>Tag</b>	Ventily_DB_OS02_Man_CL/OP
----------------------	---------------	------------	---------------------------

Graphic view\_8

<b>Type</b>	Graphic view	<b>Name</b>	Graphic view_8
<b>X position</b>	135	<b>Y position</b>	290
<b>Width</b>	32	<b>Height</b>	32
<b>Layer</b>	0 - Layer_0	<b>Graphic</b>	Graphic_18
<b>Fit graphic to size</b>	Stretch graphic		

Dynamizations\Visibility

<b>Tag - Cycle</b>	HSO01_OPN -	<b>Data type</b>	Range
<b>Start range</b>	1	<b>End range</b>	1
<b>Visibility</b>	Visible		

Switch\_5

<b>Type</b>	Switch	<b>Name</b>	Switch_5
-------------	--------	-------------	----------

Totally Integrated Automation Portal			
--------------------------------------	--	--	--

X position	125	Y position	329
Width	55	Height	23
Layer	0 - Layer_0	Mode	Switch with text
Dynamizations\Tag connection			
Property name	Process value	Tag	Ventily_DB_HSO01_Man/Auto

Switch\_6

Type	Switch	Name	Switch_6
X position	125	Y position	357
Width	55	Height	23
Layer	0 - Layer_0	Mode	Switch
Dynamizations\Visibility			
Tag - Cycle	Ventily_DB_HSO01_Man/Auto -	Data type	Range
Start range	0	End range	0
Visibility	Visible		
Dynamizations\Tag connection			
Property name	Process value	Tag	Ventily_DB_HSO01_Man_CL/OP

Rectangle\_2

Type	Rectangle	Name	Rectangle_2
X position	15	Y position	137
Width	18	Height	18
Layer	0 - Layer_0	Background color	222, 219, 222
Border color	24, 28, 49		
Dynamizations\Appearance			
Tag - Cycle	Porolog_ERR_podtlak_mimo_meze -	Data type	Range
Range	0..0	Foreground color	24, 28, 49
Background color	217, 217, 217	Flashing	No
Range	1..1	Foreground color	24, 28, 49
Background color	255, 0, 0	Flashing	No

Rectangle\_3

Type	Rectangle	Name	Rectangle_3
X position	15	Y position	158
Width	18	Height	18
Layer	0 - Layer_0	Background color	222, 219, 222
Border color	24, 28, 49		
Dynamizations\Appearance			
Tag - Cycle	Porolog_ERR_podtlak_nedosazen -	Data type	Range
Range	0..0	Foreground color	24, 28, 49
Background color	217, 217, 217	Flashing	No
Range	1..1	Foreground color	24, 28, 49
Background color	255, 0, 0	Flashing	No

Text field\_34

Type	Text field	Name	Text field_34
X position	33	Y position	157
Width	127	Height	20
Layer	0 - Layer_0	Font	Tahoma, 13px, style=Bold
Text	Podtlak nedosažen		

Text field\_35

Type	Text field	Name	Text field_35
X position	33	Y position	136
Width	128	Height	20

Totally Integrated Automation Portal			
--------------------------------------	--	--	--

Layer	0 - Layer_0	Font	Tahoma, 13px, style=Bold
Text	Podtlak mimo meze		

Graphic view\_5

Type	Graphic view	Name	Graphic view_5
X position	351	Y position	339
Width	26	Height	30
Layer	0 - Layer_0	Graphic	Graphic_15
Fit graphic to size	Stretch graphic		

Dynamizations\Visibility

Tag - Cycle	OS02_OPN -	Data type	Range
Start range	1	End range	1
Visibility	Visible		

Graphic view\_9

Type	Graphic view	Name	Graphic view_9
X position	351	Y position	339
Width	26	Height	30
Layer	0 - Layer_0	Graphic	Graphic_14
Fit graphic to size	Stretch graphic		

Dynamizations\Visibility

Tag - Cycle	OS02_OPN -	Data type	Range
Start range	0	End range	0
Visibility	Visible		

Graphic view\_10

Type	Graphic view	Name	Graphic view_10
X position	135	Y position	289
Width	32	Height	32
Layer	0 - Layer_0	Graphic	Graphic_20
Fit graphic to size	Stretch graphic		

Dynamizations\Visibility

Tag - Cycle	HSO01_OPN -	Data type	Range
Start range	0	End range	0
Visibility	Visible		

Graphic view\_11

Type	Graphic view	Name	Graphic view_11
X position	135	Y position	290
Width	32	Height	32
Layer	0 - Layer_0	Graphic	Graphic_22
Fit graphic to size	Stretch graphic		

Dynamizations\Visibility

Tag - Cycle	Ventily_DB_HSO01_Porucha -	Data type	Range
Start range	1	End range	1
Visibility	Visible		

Rectangle\_4

Type	Rectangle	Name	Rectangle_4
X position	15	Y position	116
Width	18	Height	18
Layer	0 - Layer_0	Background color	222, 219, 222
Border color	24, 28, 49		

Dynamizations\Appearance

Tag - Cycle	Pretrh -	Data type	Range
-------------	----------	-----------	-------

--	--	--

Totally Integrated Automation Portal			
Range	1..1	Foreground color	24, 28, 49
Background color	222, 219, 222	Flashing	No
Range	0..0	Foreground color	24, 28, 49
Background color	255, 0, 0	Flashing	Yes
Text field_7			
Type	Text field	Name	Text field_7
X position	33	Y position	115
Width	47	Height	20
Layer	0 - Layer_0	Font	Tahoma, 13px, style=Bold
Text	Přetrh		
I/O field_3			
Type	I/O field	Name	I/O field_3
X position	9	Y position	413
Width	462	Height	28
Layer	0 - Layer_0	Mode	Output
Font	Tahoma, 16px, style=Bold		
Dynamizations\Tag connection			
Property name	Process value	Tag	Porolog_Krok_sekvence_porologu_string
Graphic view_12			
Type	Graphic view	Name	Graphic view_12
X position	76	Y position	137
Width	261	Height	200
Layer	0 - Layer_0	Graphic	Graphic_24
Fit graphic to size	Stretch graphic		
Graphic view_1			
Type	Graphic view	Name	Graphic view_1
X position	593	Y position	229
Width	44	Height	44
Layer	0 - Layer_0	Graphic	Graphic_26
Fit graphic to size	Stretch graphic		
Graphic view_13			
Type	Graphic view	Name	Graphic view_13
X position	592	Y position	291
Width	44	Height	44
Layer	0 - Layer_0	Graphic	Graphic_26
Fit graphic to size	Stretch graphic		
Line_8			
Type	Line	Name	Line_8
X position	616	Y position	210
Width	153	Height	0
Layer	0 - Layer_0	Line width	2
Color	0, 0, 255	Background color	255, 255, 255
Line_10			
Type	Line	Name	Line_10
X position	616	Y position	276
Width	157	Height	0

Totally Integrated Automation Portal			
Layer	0 - Layer_0	Line width	2
Color	0, 0, 255	Background color	255, 255, 255
Line_12			
Type	Line	Name	Line_12
X position	616	Y position	211
Width	0	Height	19
Layer	0 - Layer_0	Line width	2
Color	0, 0, 255	Background color	255, 255, 255
Line_13			
Type	Line	Name	Line_13
X position	616	Y position	272
Width	0	Height	4
Layer	0 - Layer_0	Line width	2
Color	0, 0, 255	Background color	255, 255, 255
Line_14			
Type	Line	Name	Line_14
X position	616	Y position	334
Width	0	Height	19
Layer	0 - Layer_0	Line width	2
Color	0, 0, 255	Background color	255, 255, 255
Line_15			
Type	Line	Name	Line_15
X position	749	Y position	199
Width	24	Height	0
Layer	0 - Layer_0	Line width	2
Color	0, 0, 255	Background color	255, 255, 255
Line_11			
Type	Line	Name	Line_11
X position	616	Y position	353
Width	153	Height	0
Layer	0 - Layer_0	Line width	2
Color	0, 0, 255	Background color	255, 255, 255
Line_16			
Type	Line	Name	Line_16
X position	750	Y position	364
Width	24	Height	0
Layer	0 - Layer_0	Line width	2
Color	0, 0, 255	Background color	255, 255, 255
Line_17			
Type	Line	Name	Line_17
X position	388	Y position	171
Width	19	Height	0
Layer	0 - Layer_0	Line width	1
Color	24, 28, 49	Background color	255, 255, 255



Totally Integrated Automation Portal					
<b>Line_18</b>					
Type	Line	Name	Line_18		
X position	389	Y position	175		
Width	0	Height	75		
Layer	0 - Layer_0	Line width	1		
Color	24, 28, 49	Background color	255, 255, 255		
<b>Line_19</b>					
Type	Line	Name	Line_19		
X position	389	Y position	313		
Width	0	Height	43		
Layer	0 - Layer_0	Line width	1		
Color	24, 28, 49	Background color	255, 255, 255		
<b>Line_20</b>					
Type	Line	Name	Line_20		
X position	389	Y position	356		
Width	19	Height	0		
Layer	0 - Layer_0	Line width	1		
Color	24, 28, 49	Background color	255, 255, 255		
<b>Line_21</b>					
Type	Line	Name	Line_21		
X position	515	Y position	171		
Width	138	Height	0		
Layer	0 - Layer_0	Line width	1		
Color	24, 28, 49	Background color	255, 255, 255		
<b>Line_22</b>					
Type	Line	Name	Line_22		
X position	514	Y position	383		
Width	138	Height	0		
Layer	0 - Layer_0	Line width	1		
Color	24, 28, 49	Background color	255, 255, 255		
<b>Line_23</b>					
Type	Line	Name	Line_23		
X position	616	Y position	287		
Width	157	Height	0		
Layer	0 - Layer_0	Line width	2		
Color	0, 0, 255	Background color	255, 255, 255		
<b>Line_24</b>					
Type	Line	Name	Line_24		
X position	616	Y position	287		
Width	0	Height	4		
Layer	0 - Layer_0	Line width	2		
Color	0, 0, 255	Background color	255, 255, 255		
<b>Text field_8</b>					
Type	Text field	Name	Text field_8		
X position	131	Y position	272		
Width	44	Height	20		

Totally Integrated Automation Portal			
--------------------------------------	--	--	--

Layer	0 - Layer_0	Font	Tahoma, 13px
Text	HSO01		

Text field\_9

Type	Text field	Name	Text field_9
X position	342	Y position	162
Width	40	Height	20
Layer	0 - Layer_0	Font	Tahoma, 13px
Text	Profuk		

Text field\_10

Type	Text field	Name	Text field_10
X position	343	Y position	378
Width	41	Height	20
Layer	0 - Layer_0	Font	Tahoma, 13px
Text	Profuk		

Button\_6

Type	Button	Name	Button_6
X position	693	Y position	450
Width	100	Height	30
Mode	Text	Text OFF	NASTAVENÍ
Text ON	Text		

Dynamizations\Event

Event name	Click
------------	-------

Function list\ActivateScreen

Screen name	20_Nastaveni	Object number	0
-------------	--------------	---------------	---

Button\_7

Type	Button	Name	Button_7
X position	589	Y position	450
Width	100	Height	30
Mode	Text	Text OFF	TREND
Text ON	Text		

Dynamizations\Event

Event name	Click
------------	-------

Function list\ActivateScreen

Screen name	40_Trend_porozita	Object number	0
-------------	-------------------	---------------	---

I/O field\_4

Type	I/O field	Name	I/O field_4
X position	486	Y position	413
Width	308	Height	28
Layer	0 - Layer_0	Mode	Output
Font	Tahoma, 16px, style=Bold		

Dynamizations\Tag connection

Property name	Process value	Tag	Porolog_Krok_sekvence_profuku_string
---------------	---------------	-----	--------------------------------------

--	--	--

Totally Integrated Automation Portal		
--------------------------------------	--	--

Text field\_11

Type	Text field	Name	Text field_11
X position	315	Y position	262
Width	62	Height	22
Layer	0 - Layer_0	Font	Tahoma, 15px, style=Bold
Text	Podtlak		

Line\_25

Type	Line	Name	Line_25
X position	319	Y position	287
Width	71	Height	0
Layer	0 - Layer_0	Line width	3
Color	0, 207, 255	Background color	255, 255, 255

Switch\_8

Type	Switch	Name	Switch_8
X position	411	Y position	221
Width	54	Height	20
Layer	0 - Layer_0	Mode	Switch with text

Dynamizations\Tag connection

Property name	Process value	Tag	PIC01_DB_Manual//Auto
---------------	---------------	-----	-----------------------

Switch\_9

Type	Switch	Name	Switch_9
X position	411	Y position	398
Width	54	Height	20
Layer	0 - Layer_0	Mode	Switch with text

Dynamizations\Tag connection

Property name	Process value	Tag	PIC02_DB_Manual//Auto
---------------	---------------	-----	-----------------------

Text field\_1

Type	Text field	Name	Text field_1
X position	637	Y position	15
Width	54	Height	23
Layer	0 - Layer_0	Font	Tahoma, 16px, style=Bold, Italic
Text	UPCE		

## PorologPM6-HMI [KTP700 Basic PN] / Screens

## 20\_Nastaveni

## Hardcopy of 20\_Nastaveni

**POROLOG PM6 - nastavení** UNIVERZITA PARDUBICE

**AUTOMATICKÝ PROFUK**

Profuk každých:  **00000** s

Zbývá:  **00000** s

Délka profuku:  **000** s

Zbývá:  **000** s

**KOREKCE VÝPOČTU POROZITY**  
porozita=(kof. x porozita)+offset

Koeficient:  **+0.00**

Offset:  **+0.00**


**HYSTEREZE PODTLAKU**

Hystereze +/-:  **+0.0** mbar

**POMOCNÁ ZÓNA**

**provoz bez pomocné zóny** ▾

**ODKALOVACÍ VENTIL OS3**

  **MAN**

**OFF**

**ZPĚT**

Name	20_Nastaveni	Background color	181, 182, 181
Grid color	0, 0, 0	Number	5
Template		Tooltip	

## Rectangle\_1

Type	Rectangle	Name	Rectangle_1
X position	0	Y position	0
Width	799	Height	55
Layer	0 - Layer_0	Background color	0, 0, 132
Border color	24, 28, 49		

## Text field\_3

Type	Text field	Name	Text field_3
X position	11	Y position	9
Width	432	Height	43
Layer	0 - Layer_0	Font	Tahoma, 32px, style=Bold
Text	POROLOG PM6 - nastavení		

## Text field\_1

Type	Text field	Name	Text field_1
X position	512	Y position	16
Width	217	Height	23
Layer	0 - Layer_0	Font	Tahoma, 16px, style=Bold, Italic
Text	UNIVERZITA PARDUBICE		

Totally Integrated Automation Portal			
Text field_7			
Type	Text field	Name	Text field_7
X position	32	Y position	76
Width	201	Height	23
Layer	0 - Layer_0	Font	Tahoma, 16px, style=Bold
Text	AUTOMATICKÝ PROFUK		
Text field_8			
Type	Text field	Name	Text field_8
X position	32	Y position	260
Width	257	Height	23
Layer	0 - Layer_0	Font	Tahoma, 16px, style=Bold
Text	KOREKCE VÝPOČTU POROZITY		
Text field_9			
Type	Text field	Name	Text field_9
X position	440	Y position	79
Width	196	Height	23
Layer	0 - Layer_0	Font	Tahoma, 16px, style=Bold
Text	HYSTEREZE PODTLAKU		
Text field_10			
Type	Text field	Name	Text field_10
X position	42	Y position	105
Width	118	Height	23
Layer	0 - Layer_0	Font	Tahoma, 16px
Text	Profuk každých:		
Text field_11			
Type	Text field	Name	Text field_11
X position	42	Y position	133
Width	53	Height	23
Layer	0 - Layer_0	Font	Tahoma, 16px
Text	Zbývá:		
I/O field_3			
Type	I/O field	Name	I/O field_3
X position	173	Y position	103
Width	70	Height	30
Layer	0 - Layer_0	Mode	Input
Font	Tahoma, 19px, style=Bold		
Dynamizations\Tag connection			
Property name	Process value	Tag	Porolog_Profuk_po_case
I/O field_4			
Type	I/O field	Name	I/O field_4
X position	173	Y position	137
Width	70	Height	25
Layer	0 - Layer_0	Mode	Output
Font	Tahoma, 16px, style=Bold		
Dynamizations\Tag connection			
Property name	Process value	Tag	Porolog_Profuk_zbyva

Totally Integrated Automation Portal			
Text field_12			
Type	Text field	Name	Text field_12
X position	243	Y position	106
Width	13	Height	23
Layer	0 - Layer_0	Font	Tahoma, 16px, style=Bold
Text	s		
Text field_13			
Type	Text field	Name	Text field_13
X position	243	Y position	136
Width	13	Height	23
Layer	0 - Layer_0	Font	Tahoma, 16px, style=Bold
Text	s		
Text field_14			
Type	Text field	Name	Text field_14
X position	42	Y position	176
Width	110	Height	23
Layer	0 - Layer_0	Font	Tahoma, 16px
Text	Délka profuku:		
Text field_15			
Type	Text field	Name	Text field_15
X position	42	Y position	204
Width	53	Height	23
Layer	0 - Layer_0	Font	Tahoma, 16px
Text	Zbývá:		
I/O field_5			
Type	I/O field	Name	I/O field_5
X position	173	Y position	174
Width	70	Height	30
Layer	0 - Layer_0	Mode	Input
Font	Tahoma, 19px, style=Bold		
Dynamizations\Tag connection			
Property name	Process value	Tag	Porolog_Delka_profuku
I/O field_6			
Type	I/O field	Name	I/O field_6
X position	173	Y position	207
Width	70	Height	25
Layer	0 - Layer_0	Mode	Output
Font	Tahoma, 16px, style=Bold		
Dynamizations\Tag connection			
Property name	Process value	Tag	Porolog_Delka_profuku_zbyva
Text field_16			
Type	Text field	Name	Text field_16
X position	243	Y position	177
Width	13	Height	23
Layer	0 - Layer_0	Font	Tahoma, 16px, style=Bold
Text	s		

Totally Integrated Automation Portal		
--------------------------------------	--	--

Text field\_17

Type	Text field	Name	Text field_17
X position	243	Y position	209
Width	13	Height	23
Layer	0 - Layer_0	Font	Tahoma, 16px, style=Bold
Text	s		

Text field\_18

Type	Text field	Name	Text field_18
X position	37	Y position	279
Width	247	Height	23
Layer	0 - Layer_0	Font	Tahoma, 16px
Text	porozita=(koef. x porozita)+offset		

Text field\_19

Type	Text field	Name	Text field_19
X position	44	Y position	313
Width	79	Height	23
Layer	0 - Layer_0	Font	Tahoma, 16px
Text	Koeficient:		

Text field\_20

Type	Text field	Name	Text field_20
X position	44	Y position	340
Width	53	Height	23
Layer	0 - Layer_0	Font	Tahoma, 16px
Text	Offset:		

I/O field\_7

Type	I/O field	Name	I/O field_7
X position	173	Y position	306
Width	70	Height	30
Layer	0 - Layer_0	Mode	Input
Font	Tahoma, 19px, style=Bold		

Dynamizations\Tag connection

Property name	Process value	Tag	Porolog_Koeficient_prodysnost
---------------	---------------	-----	-------------------------------

I/O field\_8

Type	I/O field	Name	I/O field_8
X position	173	Y position	338
Width	70	Height	30
Layer	0 - Layer_0	Mode	Input
Font	Tahoma, 19px, style=Bold		

Dynamizations\Tag connection

Property name	Process value	Tag	Porolog_Offset_prodysnost
---------------	---------------	-----	---------------------------

Text field\_23

Type	Text field	Name	Text field_23
X position	449	Y position	107
Width	108	Height	23
Layer	0 - Layer_0	Font	Tahoma, 16px
Text	Hystereze +/-:		

Totally Integrated Automation Portal		
--------------------------------------	--	--

I/O field\_9

Type	I/O field	Name	I/O field_9
X position	576	Y position	105
Width	70	Height	30
Layer	0 - Layer_0	Mode	Input
Font	Tahoma, 19px, style=Bold		

Dynamizations\Tag connection

Property name	Process value	Tag	Porolog_Hystereze_podtlaku
---------------	---------------	-----	----------------------------

Text field\_24

Type	Text field	Name	Text field_24
X position	646	Y position	109
Width	42	Height	23
Layer	0 - Layer_0	Font	Tahoma, 16px
Text	mbar		

Symbolic I/O field\_1

Type	Symbolic I/O field	Name	Symbolic I/O field_1
X position	451	Y position	194
Width	239	Height	29
Layer	0 - Layer_0	Mode	Input
Font	Tahoma, 15px, style=Bold	Text list	Volba_provozu

Dynamizations\Tag connection

Property name	Process value	Tag	Porolog_Volba_pomocne_zony
---------------	---------------	-----	----------------------------

Text field\_2

Type	Text field	Name	Text field_2
X position	440	Y position	167
Width	140	Height	23
Layer	0 - Layer_0	Font	Tahoma, 16px, style=Bold
Text	POMOCNÁ ZÓNA		

Line\_1

Type	Line	Name	Line_1
X position	393	Y position	78
Width	0	Height	339
Layer	0 - Layer_0	Line width	1
Color	24, 28, 49	Background color	255, 255, 255

Line\_6

Type	Line	Name	Line_6
X position	465	Y position	295
Width	0	Height	65
Layer	0 - Layer_0	Line width	2
Color	0, 0, 255	Background color	255, 255, 255

Graphic view\_3

Type	Graphic view	Name	Graphic view_3
X position	453	Y position	308
Width	26	Height	30
Layer	0 - Layer_0	Graphic	Graphic_15
Fit graphic to size	Stretch graphic		

--	--	--



Totally Integrated Automation Portal			
<b>Dynamizations\Visibility</b>			
Tag - Cycle	OS03_OPN -	Data type	Range
Start range	1	End range	1
Visibility	Visible		
<b>Switch_1</b>			
Type	Switch	Name	Switch_1
X position	501	Y position	300
Width	55	Height	23
Layer	0 - Layer_0	Mode	Switch with text
<b>Dynamizations\Tag connection</b>			
Property name	Process value	Tag	Ventily_DB_OS03_Man/Auto
<b>Switch_2</b>			
Type	Switch	Name	Switch_2
X position	501	Y position	331
Width	55	Height	23
Layer	0 - Layer_0	Mode	Switch
<b>Dynamizations\Tag connection</b>			
Property name	Process value	Tag	Ventily_DB_OS03_Man_CL/OP
<b>Dynamizations\Visibility</b>			
Tag - Cycle	Ventily_DB_OS03_Man/Auto -	Data type	Range
Start range	0	End range	0
Visibility	Visible		
<b>Graphic view_4</b>			
Type	Graphic view	Name	Graphic view_4
X position	453	Y position	308
Width	26	Height	30
Layer	0 - Layer_0	Graphic	Graphic_14
Fit graphic to size	Stretch graphic		
<b>Dynamizations\Visibility</b>			
Tag - Cycle	OS03_OPN -	Data type	Range
Start range	0	End range	0
Visibility	Visible		
<b>Text field_4</b>			
Type	Text field	Name	Text field_4
X position	440	Y position	260
Width	216	Height	23
Layer	0 - Layer_0	Font	Tahoma, 16px, style=Bold
Text	ODKALOVACÍ VENTIL OS3		
<b>Button_4</b>			
Type	Button	Name	Button_4
X position	613	Y position	444
Width	173	Height	35
Mode	Text	Text OFF	ZPĚT
Text ON	Text		
<b>Dynamizations\Event</b>			
Event name	Click		
<b>Function list\ActivateScreen</b>			
Screen name	10_Hlavni_obrazovka	Object number	0

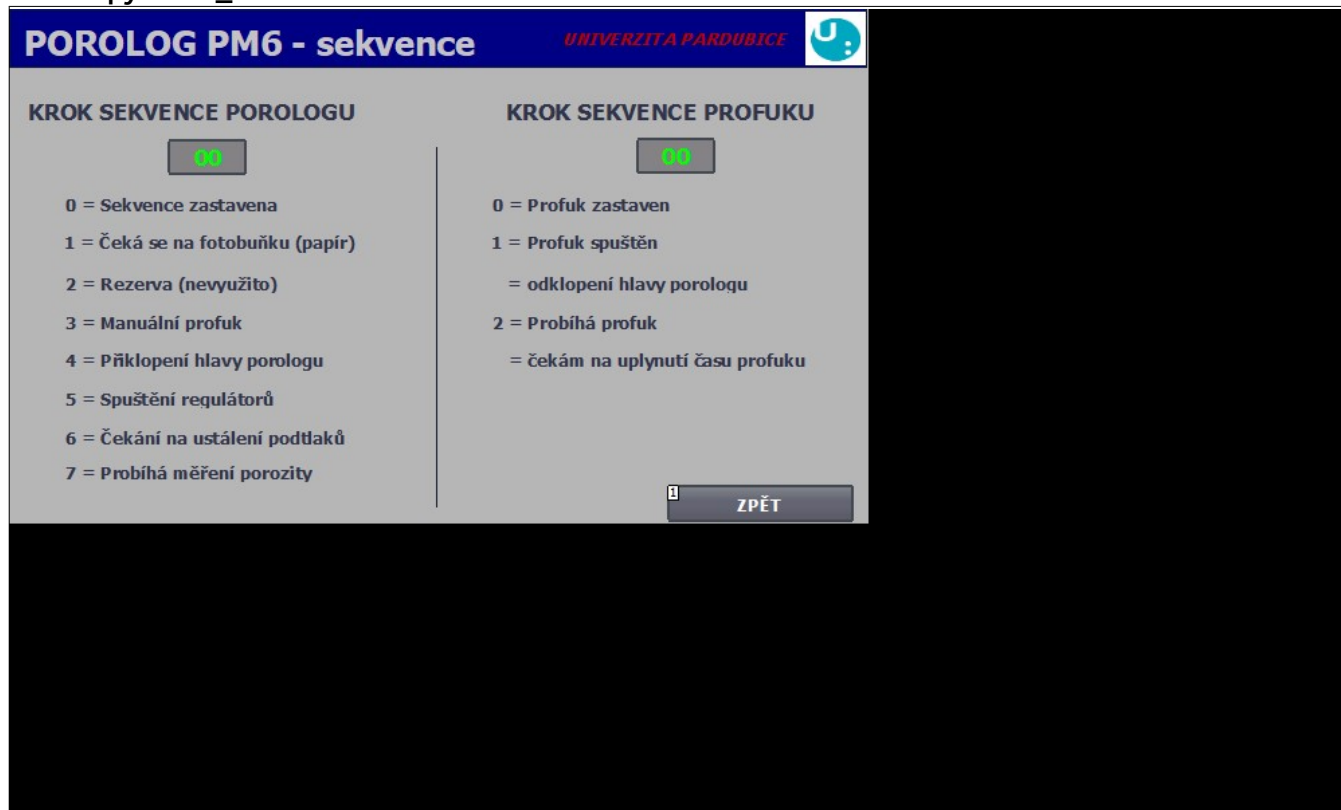
Graphic view\_2

Type	Graphic view	Name	Graphic view_2
X position	741	Y position	3
Width	57	Height	50
Layer	0 - Layer_0	Graphic	upce-fei-logo_2
Fit graphic to size	Stretch graphic		

## PorologPM6-HMI [KTP700 Basic PN] / Screens

## 30\_Sekvence

## Hardcopy of 30\_Sekvence



Name	30_Sekvence	Background color	181, 182, 181
Grid color	0, 0, 0	Number	3
Template		Tooltip	

## Text field\_7

Type	Text field	Name	Text field_7
X position	459	Y position	80
Width	293	Height	29
Layer	0 - Layer_0	Font	Tahoma, 21px, style=Bold
Text	KROK SEKVENCE PROFUKU		

## Text field\_1

Type	Text field	Name	Text field_1
X position	14	Y position	80
Width	310	Height	29
Layer	0 - Layer_0	Font	Tahoma, 21px, style=Bold
Text	KROK SEKVENCE POROLOGU		

## Text field\_3

Type	Text field	Name	Text field_3
X position	11	Y position	9
Width	425	Height	43
Layer	0 - Layer_0	Font	Tahoma, 32px, style=Bold
Text	POROLOG PM6 - sekvence		

## Rectangle\_1

Type	Rectangle	Name	Rectangle_1
X position	0	Y position	0
Width	799	Height	55
Layer	0 - Layer_0	Background color	0, 0, 132
Border color	24, 28, 49		

## Text field\_4

Type	Text field	Name	Text field_4
X position	49	Y position	171
Width	203	Height	23
Layer	0 - Layer_0	Font	Tahoma, 16px, style=Bold
Text	0 = Sekvence zastavena		

## Text field\_5

Type	Text field	Name	Text field_5
X position	48	Y position	206
Width	276	Height	23
Layer	0 - Layer_0	Font	Tahoma, 16px, style=Bold
Text	1 = Čeká se na fotobuňku (papír)		

## Text field\_6

Type	Text field	Name	Text field_6
X position	49	Y position	244
Width	203	Height	23
Layer	0 - Layer_0	Font	Tahoma, 16px, style=Bold
Text	2 = Rezerva (nevyužito)		

## Text field\_8

Type	Text field	Name	Text field_8
X position	49	Y position	280
Width	170	Height	23
Layer	0 - Layer_0	Font	Tahoma, 16px, style=Bold
Text	3 = Manuální profuk		

## Text field\_9

Type	Text field	Name	Text field_9
X position	49	Y position	316
Width	246	Height	23
Layer	0 - Layer_0	Font	Tahoma, 16px, style=Bold
Text	4 = Přiklopení hlavy porologu		

## Text field\_10

Type	Text field	Name	Text field_10
X position	49	Y position	352
Width	199	Height	23
Layer	0 - Layer_0	Font	Tahoma, 16px, style=Bold
Text	5 = Spuštění regulátorů		

## Text field\_11

Type	Text field	Name	Text field_11
X position	49	Y position	388
Width	266	Height	23

Totally Integrated Automation Portal			
--------------------------------------	--	--	--

Layer	0 - Layer_0	Font	Tahoma, 16px, style=Bold
Text	6 = Čekání na ustálení podtlaků		

Text field\_12

Type	Text field	Name	Text field_12
X position	49	Y position	420
Width	235	Height	23
Layer	0 - Layer_0	Font	Tahoma, 16px, style=Bold
Text	7 = Probíhá měření porozity		

I/O field\_1

Type	I/O field	Name	I/O field_1
X position	148	Y position	121
Width	73	Height	34
Layer	0 - Layer_0	Mode	Output
Font	Tahoma, 21px, style=Bold		

Dynamizations\Tag connection

Property name	Process value	Tag	Porolog_Krok_sekvence_porologu
---------------	---------------	-----	--------------------------------

I/O field\_2

Type	I/O field	Name	I/O field_2
X position	584	Y position	120
Width	73	Height	34
Layer	0 - Layer_0	Mode	Output
Font	Tahoma, 21px, style=Bold		

Dynamizations\Tag connection

Property name	Process value	Tag	Porolog_Krok_sekvence_profuku
---------------	---------------	-----	-------------------------------

Line\_1

Type	Line	Name	Line_1
X position	397	Y position	128
Width	0	Height	337
Layer	0 - Layer_0	Line width	1
Color	24, 28, 49	Background color	255, 255, 255

Text field\_13

Type	Text field	Name	Text field_13
X position	447	Y position	171
Width	170	Height	23
Layer	0 - Layer_0	Font	Tahoma, 16px, style=Bold
Text	0 = Profuk zastaven		

Text field\_14

Type	Text field	Name	Text field_14
X position	446	Y position	206
Width	160	Height	23
Layer	0 - Layer_0	Font	Tahoma, 16px, style=Bold
Text	1 = Profuk spuštěn		

Text field\_15

Type	Text field	Name	Text field_15
X position	447	Y position	280
Width	159	Height	23
Layer	0 - Layer_0	Font	Tahoma, 16px, style=Bold

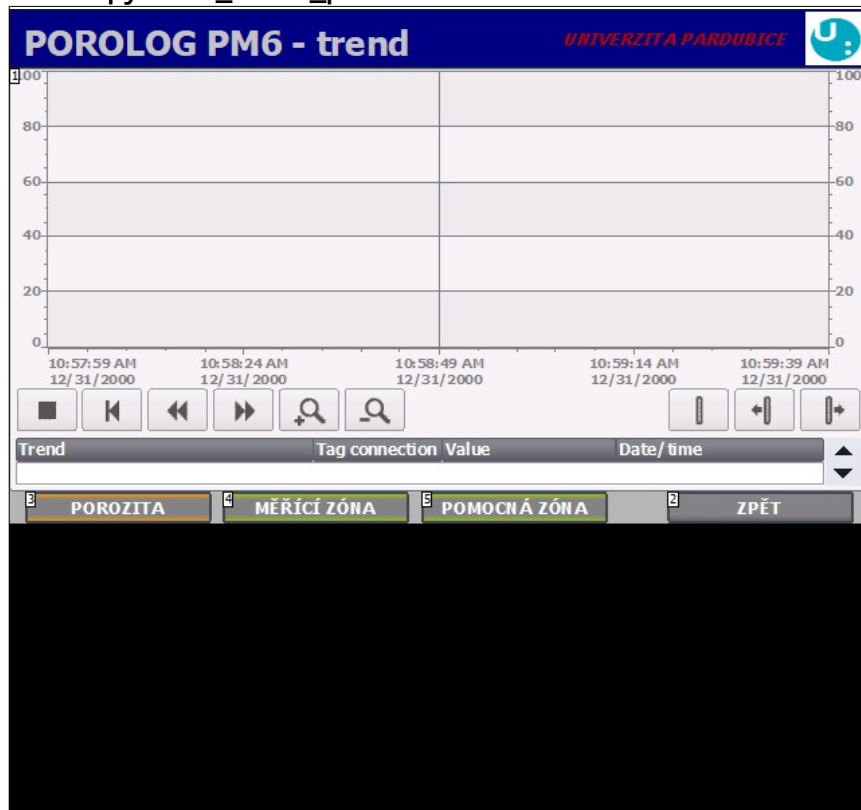
--	--	--



## PorologPM6-HMI [KTP700 Basic PN] / Screens

## 40\_Trend\_porozita

Hardcopy of 40\_Trend\_porozita



Name	40_Trend_porozita	Background color	181, 182, 181
Grid color	0, 0, 0	Number	7
Template		Tooltip	

## Rectangle\_1

Type	Rectangle	Name	Rectangle_1
X position	0	Y position	0
Width	799	Height	55
Layer	0 - Layer_0	Background color	0, 0, 132
Border color	24, 28, 49		

## Text field\_3

Type	Text field	Name	Text field_3
X position	11	Y position	9
Width	363	Height	43
Layer	0 - Layer_0	Font	Tahoma, 32px, style=Bold
Text	POROLOG PM6 - trend		

## Trend view\_1

Type	Trend view	Name	Trend view_1
X position	0	Y position	55
Width	799	Height	395
Layer	0 - Layer_0	Axis label font	Tahoma, 13px, style=Bold

Totally Integrated Automation Portal			
--------------------------------------	--	--	--

Number of visible items

1

Button\_5

Type	Button	Name	Button_5
X position	613	Y position	450
Width	173	Height	30
Mode	Text	Text OFF	ZPĚT
Text ON	Text		

Dynamizations\Event

Event name	Click
------------	-------

Function list\ActivateScreen

Screen name	10_Hlavni_obrazovka	Object number	0
-------------	---------------------	---------------	---

Button\_1

Type	Button	Name	Button_1
X position	15	Y position	450
Width	173	Height	30
Mode	Text	Text OFF	POROZITA
Text ON	Text		

Dynamizations\Event

Event name	Click
------------	-------

Function list\ActivateScreen

Screen name	40_Trend_porozita	Object number	0
-------------	-------------------	---------------	---

Button\_2

Type	Button	Name	Button_2
X position	199	Y position	450
Width	173	Height	30
Mode	Text	Text OFF	MĚŘÍCÍ ZÓNA
Text ON	Text		

Dynamizations\Event

Event name	Click
------------	-------

Function list\ActivateScreen

Screen name	41_Trend_merici zona	Object number	0
-------------	----------------------	---------------	---

Button\_3

Type	Button	Name	Button_3
X position	384	Y position	450
Width	173	Height	30
Mode	Text	Text OFF	POMOCNÁ ZÓNA
Text ON	Text		

Dynamizations\Event

Event name	Click
------------	-------

Function list\ActivateScreen

Screen name	42_Trend_pomocna zona	Object number	0
-------------	-----------------------	---------------	---

--	--	--

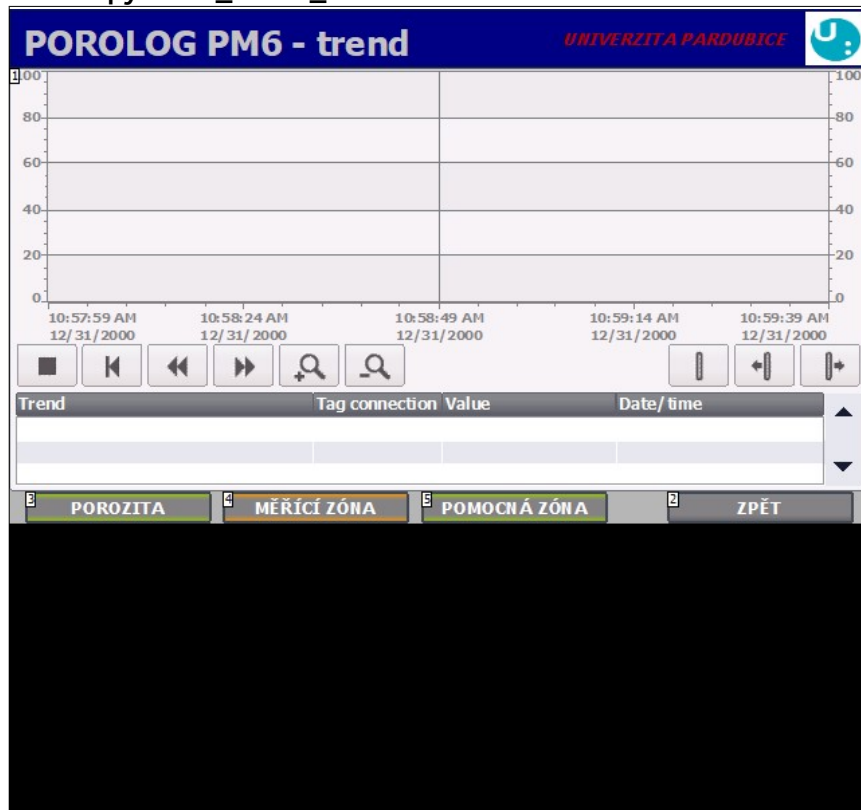




## PorologPM6-HMI [KTP700 Basic PN] / Screens

## 41\_Trend\_merici zona

Hardcopy of 41\_Trend\_merici zona



Name	41_Trend_merici zona	Background color	181, 182, 181
Grid color	0, 0, 0	Number	8
Template		Tooltip	

## Rectangle\_1

Type	Rectangle	Name	Rectangle_1
X position	0	Y position	0
Width	799	Height	55
Layer	0 - Layer_0	Background color	0, 0, 132
Border color	24, 28, 49		

## Text field\_3

Type	Text field	Name	Text field_3
X position	11	Y position	9
Width	363	Height	43
Layer	0 - Layer_0	Font	Tahoma, 32px, style=Bold
Text	POROLOG PM6 - trend		

## Trend view\_1

Type	Trend view	Name	Trend view_1
X position	0	Y position	55
Width	799	Height	395
Layer	0 - Layer_0	Axis label font	Tahoma, 13px, style=Bold

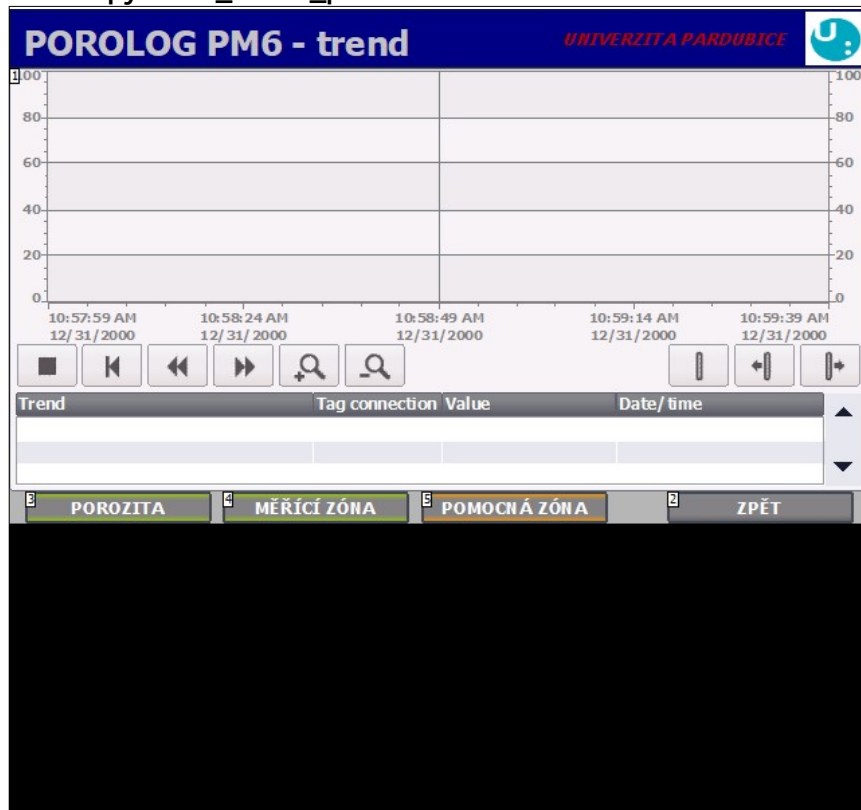
Totally Integrated Automation Portal			
Number of visible items	3		
Button_5			
Type	Button	Name	Button_5
X position	613	Y position	450
Width	173	Height	30
Mode	Text	Text OFF	ZPĚT
Text ON	Text		
Dynamizations\Event			
Event name		Click	
Function list\ActivateScreen			
Screen name	10_Hlavni_obrazovka	Object number	0
Button_1			
Type	Button	Name	Button_1
X position	15	Y position	450
Width	173	Height	30
Mode	Text	Text OFF	POROZITA
Text ON	Text		
Dynamizations\Event			
Event name		Click	
Function list\ActivateScreen			
Screen name	40_Trend_porozita	Object number	0
Button_2			
Type	Button	Name	Button_2
X position	199	Y position	450
Width	173	Height	30
Mode	Text	Text OFF	MĚŘÍCÍ ZÓNA
Text ON	Text		
Dynamizations\Event			
Event name		Click	
Function list\ActivateScreen			
Screen name	41_Trend_merici zona	Object number	0
Button_3			
Type	Button	Name	Button_3
X position	384	Y position	450
Width	173	Height	30
Mode	Text	Text OFF	POMOCNÁ ZÓNA
Text ON	Text		
Dynamizations\Event			
Event name		Click	
Function list\ActivateScreen			
Screen name	42_Trend_pomocna zona	Object number	0



## PorologPM6-HMI [KTP700 Basic PN] / Screens

## 42\_Trend\_pomocna zona

Hardcopy of 42\_Trend\_pomocna zona



Name	42_Trend_pomocna zona	Background color	181, 182, 181
Grid color	0, 0, 0	Number	9
Template		Tooltip	

## Rectangle\_1

Type	Rectangle	Name	Rectangle_1
X position	0	Y position	0
Width	799	Height	55
Layer	0 - Layer_0	Background color	0, 0, 132
Border color	24, 28, 49		

## Text field\_3

Type	Text field	Name	Text field_3
X position	11	Y position	9
Width	363	Height	43
Layer	0 - Layer_0	Font	Tahoma, 32px, style=Bold
Text	POROLOG PM6 - trend		

## Trend view\_1

Type	Trend view	Name	Trend view_1
X position	0	Y position	55
Width	799	Height	395
Layer	0 - Layer_0	Axis label font	Tahoma, 13px, style=Bold

Totally Integrated Automation Portal			
Number of visible items	3		
Button_5			
Type	Button	Name	Button_5
X position	613	Y position	450
Width	173	Height	30
Mode	Text	Text OFF	ZPĚT
Text ON	Text		
Dynamizations\Event			
Event name		Click	
Function list\ActivateScreen			
Screen name	10_Hlavni_obrazovka	Object number	0
Button_1			
Type	Button	Name	Button_1
X position	15	Y position	450
Width	173	Height	30
Mode	Text	Text OFF	PORozITA
Text ON	Text		
Dynamizations\Event			
Event name		Click	
Function list\ActivateScreen			
Screen name	40_Trend_porozita	Object number	0
Button_2			
Type	Button	Name	Button_2
X position	199	Y position	450
Width	173	Height	30
Mode	Text	Text OFF	MĚŘÍCÍ ZÓNA
Text ON	Text		
Dynamizations\Event			
Event name		Click	
Function list\ActivateScreen			
Screen name	41_Trend_merici zona	Object number	0
Button_3			
Type	Button	Name	Button_3
X position	384	Y position	450
Width	173	Height	30
Mode	Text	Text OFF	POMOCNÁ ZÓNA
Text ON	Text		
Dynamizations\Event			
Event name		Click	
Function list\ActivateScreen			
Screen name	42_Trend_pomocna zona	Object number	0



# PorologPM6-HMI [KTP700 Basic PN] / Screen management / Templates

## Template\_1

### Hardcopy of Template\_1



Name	Template_1	Background color	181, 182, 181
Grid color	0, 0, 0	Tab sequence in foreground	Enabled
Active layer	0		

#### Exit

Type	Button	Name	Exit
X position	714	Y position	429
Width	71	Height	50
Mode	Graphic	Text OFF	Exit
Text ON	Exit		

Dynamizations\Event	
Event name	Release

#### Function list\StopRuntime

Mode	Runtime
------	---------

#### Template\_Button

Type	Button	Name	Template_Button
X position	614	Y position	429
Width	71	Height	50
Mode	Text	Text OFF	
Text ON			



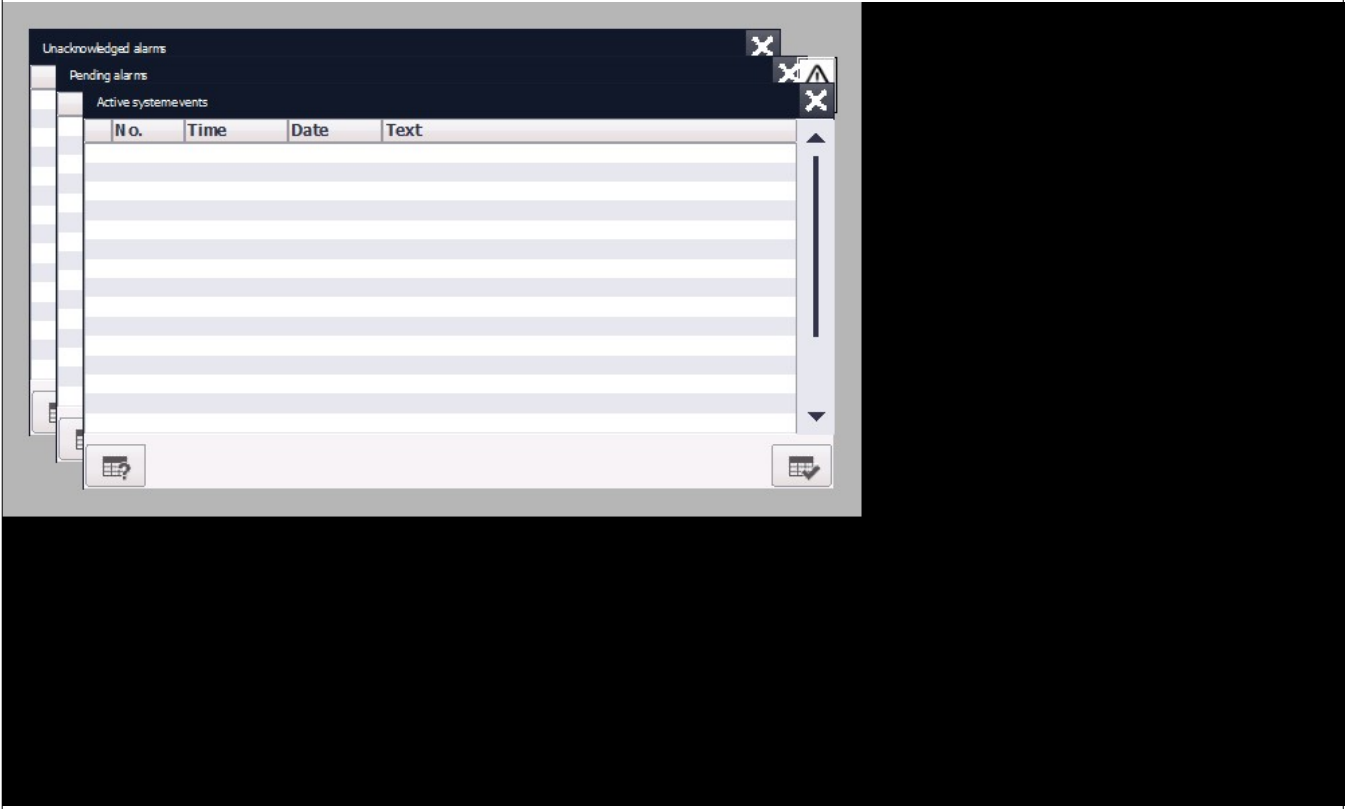
Totally Integrated Automation Portal			
Template_Button_1			
Type	Button	Name	Template_Button_1
X position	514	Y position	429
Width	71	Height	50
Mode	Text	Text OFF	
Text ON			
Template_Button_2			
Type	Button	Name	Template_Button_2
X position	414	Y position	429
Width	71	Height	50
Mode	Text	Text OFF	
Text ON			
Template_Button_3			
Type	Button	Name	Template_Button_3
X position	314	Y position	429
Width	71	Height	50
Mode	Text	Text OFF	
Text ON			
Template_Button_4			
Type	Button	Name	Template_Button_4
X position	214	Y position	429
Width	71	Height	50
Mode	Text	Text OFF	
Text ON			
Alarms			
Type	Button	Name	Alarms
X position	114	Y position	429
Width	71	Height	50
Mode	Graphic	Text OFF	Alarms
Text ON	Alarms		
Dynamizations\Event			
Event name		Release	
Function list>ShowAlarmWindow			
Object name	Alarm window_Unacknowledged	Display mode	Toggle
Start screen			
Type	Button	Name	Start screen
X position	14	Y position	429
Width	71	Height	50
Mode	Graphic	Text OFF	Start screen
Text ON	Start screen		
Symbolic_IO_Field_Screen			
Type	Symbolic I/O field	Name	Symbolic_IO_Field_Screen
X position	93	Y position	9
Width	600	Height	33
Layer	0 - Layer_0	Mode	Input/output

Totally Integrated Automation Portal					
Font	Tahoma, 20px	Text list	TextList_ScreenNames		
Dynamizations\Tag connection					
Property name	Process value	Tag	Tag_ScreenNumber		
Dynamizations\Event					
Event name		Change			
Function list\ActivateScreenByNumber					
Screen number	Tag_ScreenNumber	Object number	0		
HmiScreenItemData					
Type	Date/time field	Name	HmiScreenItemData		
X position	695	Y position	25		
Width	105	Height	25		
Font	Tahoma, 16px	Mode	Output		
HmiScreenItemData_1					
Type	Date/time field	Name	HmiScreenItemData_1		
X position	695	Y position	0		
Width	105	Height	25		
Font	Tahoma, 16px	Mode	Output		
Logo					
Type	Graphic view	Name	Logo		
X position	0	Y position	0		
Width	91	Height	51		
Layer	0 - Layer_0	Graphic	Logo of HMI_1		
Fit graphic to size	Stretch graphic				

# PorologPM6-HMI [KTP700 Basic PN] / Screen management

## Global screen

### Hardcopy of Global screen



Name	Global screen	Background color	181, 182, 181
Grid color	0, 0, 0		

#### Alarm window\_Unacknowledged

Type	Alarm window	Name	Alarm window_Unacknowledged
X position	25	Y position	25
Width	700	Height	380
Source of alarms	Alarms		

#### Alarm window\_Pending

Type	Alarm window	Name	Alarm window_Pending
X position	50	Y position	50
Width	700	Height	380
Source of alarms	Alarms		

#### Alarm indicator

Type	Alarm indicator	X position	740
Y position	51		

#### Dynamizations\Event

Event name	Click
------------	-------

#### Function list\ShowAlarmWindow

Object name	Alarm window_Pending	Display mode	Toggle
-------------	----------------------	--------------	--------

--	--	--



## PorologPM6-HMI [KTP700 Basic PN] / HMI tags

## Default tag table [51]

## Tag\_ScreenNumber

Name	Tag_ScreenNumber	Address	
Connection	<Internal tag>	Data type	UInt
Length	2		

## Ventily\_DB\_OS01\_Man/Auto

Name	Ventily_DB_OS01_Man/Auto	Address	
Connection	HMI_Connection_1	Data type	Bool
Length	1		

## Ventily\_DB\_OS01\_Man\_CL/OP

Name	Ventily_DB_OS01_Man_CL/OP	Address	
Connection	HMI_Connection_1	Data type	Bool
Length	1		

## Ventily\_DB\_OS01\_OPN

Name	Ventily_DB_OS01_OPN	Address	
Connection	HMI_Connection_1	Data type	Bool
Length	1		

## OS01\_OPN

## OS01\_OPN

Name	OS01_OPN	Address	
Connection	HMI_Connection_1	Data type	Bool
Length	1		

## OS01\_OPN

## OS02\_OPN

Name	OS02_OPN	Address	
Connection	HMI_Connection_1	Data type	Bool
Length	1		

## OS02\_OPN

## Ventily\_DB\_OS02\_Man/Auto

Name	Ventily_DB_OS02_Man/Auto	Address	
Connection	HMI_Connection_1	Data type	Bool
Length	1		

## Ventily\_DB\_OS02\_Man\_CL/OP

Name	Ventily_DB_OS02_Man_CL/OP	Address	
Connection	HMI_Connection_1	Data type	Bool
Length	1		

## HSO01\_OPN

Name	HSO01_OPN	Address	
------	-----------	---------	--

Totally Integrated Automation Portal					
Connection		HMI_Connection_1	Data type		Bool
Length		1			
HSO01_OPN					
Ventily_DB_HSO01_Man/Auto					
Name		Ventily_DB_HSO01_Man/Auto	Address		
Connection		HMI_Connection_1	Data type		Bool
Length		1			
Ventily_DB_HSO01_Man_CL/OP					
Name		Ventily_DB_HSO01_Man_CL/OP	Address		
Connection		HMI_Connection_1	Data type		Bool
Length		1			
Ventily_DB_HSO01_Porucha					
Name		Ventily_DB_HSO01_Porucha	Address		
Connection		HMI_Connection_1	Data type		Bool
Length		1			
Porolog_Prumerne_porozita					
Name		Porolog_Prumerne_porozita	Address		
Connection		HMI_Connection_1	Data type		Real
Length		4			
FI01_DB_FI01_Prutok					
Name		FI01_DB_FI01_Prutok	Address		
Connection		HMI_Connection_1	Data type		Real
Length		4			
PIC01_DB_Setpoit_PID					
Name		PIC01_DB_Setpoit_PID	Address		
Connection		HMI_Connection_1	Data type		Real
Length		4			
PIC01_DB_Merena_hodnota_ing					
Name		PIC01_DB_Merena_hodnota_ing	Address		
Connection		HMI_Connection_1	Data type		Real
Length		4			
PIC01_DB_Vystup_PID					
Name		PIC01_DB_Vystup_PID	Address		
Connection		HMI_Connection_1	Data type		Real
Length		4			
PIC02_DB_Setpoit_PID					
Name		PIC02_DB_Setpoit_PID	Address		
Connection		HMI_Connection_1	Data type		Real
Length		4			
PIC02_DB_Merena_hodnota_ing					
Name		PIC02_DB_Merena_hodnota_ing	Address		
Connection		HMI_Connection_1	Data type		Real

Totally Integrated Automation Portal		
Length	4	
PIC02_DB_Vystup_PID		
Name	PIC02_DB_Vystup_PID	Address
Connection	HMI_Connection_1	Data type
Length	4	Real
Porolog_Vypoctena_prodysnost		
Name	Porolog_Vypoctena_prodysnost	Address
Connection	HMI_Connection_1	Data type
Length	4	Real
Porolog_Profuk_po_case		
Name	Porolog_Profuk_po_case	Address
Connection	HMI_Connection_1	Data type
Length	2	Int
Porolog_Profuk_zbyva		
Name	Porolog_Profuk_zbyva	Address
Connection	HMI_Connection_1	Data type
Length	2	Int
Porolog_Delka_profuku		
Name	Porolog_Delka_profuku	Address
Connection	HMI_Connection_1	Data type
Length	2	Int
Porolog_Delka_profuku_zbyva		
Name	Porolog_Delka_profuku_zbyva	Address
Connection	HMI_Connection_1	Data type
Length	2	Int
Porolog_Koeficient_prodysnost		
Name	Porolog_Koeficient_prodysnost	Address
Connection	HMI_Connection_1	Data type
Length	4	Real
Porolog_Offset_prodysnost		
Name	Porolog_Offset_prodysnost	Address
Connection	HMI_Connection_1	Data type
Length	4	Real
Porolog_Hystereze_podtlaku		
Name	Porolog_Hystereze_podtlaku	Address
Connection	HMI_Connection_1	Data type
Length	4	Real
Porolog_TL_START		
Name	Porolog_TL_START	Address
Connection	HMI_Connection_1	Data type
Length	1	Bool

Totally Integrated Automation Portal		
<b>Porolog_TL_STOP</b>		
Name	Porolog_TL_STOP	Address
Connection	HMI_Connection_1	Data type
Length	1	Bool
<b>Porolog_TL_PROFUK</b>		
Name	Porolog_TL_PROFUK	Address
Connection	HMI_Connection_1	Data type
Length	1	Bool
<b>Porolog_TL_RESET</b>		
Name	Porolog_TL_RESET	Address
Connection	HMI_Connection_1	Data type
Length	1	Bool
<b>Porolog_Volba_pomocne_zony</b>		
Name	Porolog_Volba_pomocne_zony	Address
Connection	HMI_Connection_1	Data type
Length	1	Bool
<b>Porolog_Krok_sekvence_porologu</b>		
Name	Porolog_Krok_sekvence_porologu	Address
Connection	HMI_Connection_1	Data type
Length	2	Int
<b>Porolog_Krok_sekvence_profuku</b>		
Name	Porolog_Krok_sekvence_profuku	Address
Connection	HMI_Connection_1	Data type
Length	2	Int
<b>Porolog_ERR_podtlak_nedosazen</b>		
Name	Porolog_ERR_podtlak_nedosazen	Address
Connection	HMI_Connection_1	Data type
Length	1	Bool
<b>Porolog_ERR_podtlak_mimo_meze</b>		
Name	Porolog_ERR_podtlak_mimo_meze	Address
Connection	HMI_Connection_1	Data type
Length	1	Bool
<b>Pretrh</b>		
Name	Pretrh	Address
Connection	HMI_Connection_1	Data type
Length	1	Bool
<b>Pretrh</b>		
<b>PIC01_DB_Manual/Auto</b>		
Name	PIC01_DB_Manual/Auto	Address
Connection	HMI_Connection_1	Data type
Length	1	Bool



Totally Integrated Automation Portal		
<b>PIC02_DB_Manual/Auto</b>		
Name	PIC02_DB_Manual/Auto	Address
Connection	HMI_Connection_1	Data type
Length	1	Bool
<b>FI01_DB_Merena_hodnota_ing</b>		
Name	FI01_DB_Merena_hodnota_ing	Address
Connection	HMI_Connection_1	Data type
Length	4	Real
<b>FI01_DB_Analog_vstup</b>		
Name	FI01_DB_Analog_vstup	Address
Connection	HMI_Connection_1	Data type
Length	2	Int
<b>PIC01_DB_Analog_vstup</b>		
Name	PIC01_DB_Analog_vstup	Address
Connection	HMI_Connection_1	Data type
Length	2	Int
<b>PIC01_DB_Manual_Value</b>		
Name	PIC01_DB_Manual_Value	Address
Connection	HMI_Connection_1	Data type
Length	4	Real
<b>Ventily_DB_OS03_Man/Auto</b>		
Name	Ventily_DB_OS03_Man/Auto	Address
Connection	HMI_Connection_1	Data type
Length	1	Bool
<b>Ventily_DB_OS03_Man_CL/OP</b>		
Name	Ventily_DB_OS03_Man_CL/OP	Address
Connection	HMI_Connection_1	Data type
Length	1	Bool
<b>OS03_OPN</b>		
Name	OS03_OPN	Address
Connection	HMI_Connection_1	Data type
Length	1	Bool
<b>OS03_OPN</b>		
<b>Porolog_Krok_sekvence_porologu_string</b>		
Name	Porolog_Krok_sekvence_porologu_string	Address
Connection	HMI_Connection_1	Data type
Length	254	String
<b>Porolog_Krok_sekvence_profuku_string</b>		
Name	Porolog_Krok_sekvence_profuku_string	Address
Connection	HMI_Connection_1	Data type
Length	254	String

Totally Integrated Automation Portal		
--------------------------------------	--	--

POROZITA

Name	POROZITA	Address	
Connection	HMI_Connection_1	Data type	Int
Length	2		

POROZITA

Porozita\_OUT

Name	Porozita_OUT	Address	
Connection	HMI_Connection_1	Data type	Int
Length	2		

Porozita\_OUT

--	--	--

PorologPM6-HMI [KTP700 Basic PN]

Connections

HMI\_Connection\_1

Name	HMI_Connection_1	Communication driver	SIMATIC S7 1200
Comment			

PorologPM6-HMI [KTP700 Basic PN] / HMI alarms

Discrete alarms

This folder is empty.

**PorologPM6-HMI [KTP700 Basic PN] / HMI alarms**

**Analog alarms**

This folder is empty.

## PorologPM6-HMI [KTP700 Basic PN] / HMI alarms

### Alarm groups

#### Alarm\_group\_1

Name	Alarm_group_1	ID	1
------	---------------	----	---

#### Alarm\_group\_10

Name	Alarm_group_10	ID	10
------	----------------	----	----

#### Alarm\_group\_11

Name	Alarm_group_11	ID	11
------	----------------	----	----

#### Alarm\_group\_12

Name	Alarm_group_12	ID	12
------	----------------	----	----

#### Alarm\_group\_13

Name	Alarm_group_13	ID	13
------	----------------	----	----

#### Alarm\_group\_14

Name	Alarm_group_14	ID	14
------	----------------	----	----

#### Alarm\_group\_15

Name	Alarm_group_15	ID	15
------	----------------	----	----

#### Alarm\_group\_16

Name	Alarm_group_16	ID	16
------	----------------	----	----

#### Alarm\_group\_2

Name	Alarm_group_2	ID	2
------	---------------	----	---

#### Alarm\_group\_3

Name	Alarm_group_3	ID	3
------	---------------	----	---

#### Alarm\_group\_4

Name	Alarm_group_4	ID	4
------	---------------	----	---

#### Alarm\_group\_5

Name	Alarm_group_5	ID	5
------	---------------	----	---

#### Alarm\_group\_6

Name	Alarm_group_6	ID	6
------	---------------	----	---

#### Alarm\_group\_7

Name	Alarm_group_7	ID	7
------	---------------	----	---

#### Alarm\_group\_8

Name	Alarm_group_8	ID	8
------	---------------	----	---

Alarm\_group\_9

Name	Alarm_group_9	ID	9
------	---------------	----	---

--	--	--

## PorologPM6-HMI [KTP700 Basic PN] / HMI alarms

### Alarm classes

#### Acknowledgement

Name	Acknowledgement	Display name	A
ID	33	Alarm log	<No log>

#### Errors

Name	Errors	Display name	!
ID	1	Alarm log	<No log>

#### No Acknowledgement

Name	No Acknowledgement	Display name	NA
ID	34	Alarm log	<No log>

#### System

Name	System	Display name	\$
ID	3	Alarm log	<No log>

#### Warnings

Name	Warnings	Display name	
ID	2	Alarm log	<No log>



Totally Integrated Automation Portal		
<div><div>PorologPM6-HMI [KTP700 Basic PN] / HMI alarms</div><div>System events</div><div>This folder is empty.</div></div>		

Totally Integrated Automation Portal		
<div><div>PorologPM6-HMI [KTP700 Basic PN]</div><div>Recipes</div><div>This folder is empty.</div></div>		

## PorologPM6-HMI [KTP700 Basic PN] / Historical data

## Datalogs

## Data\_log\_1

Name	Data_log_1	Storage location	TXT file (Unicode)
Path	\\USB_X60.1\\		

## Porozita

Name	Porozita	Process tag	Porolog_Vypoctena_prodysnost
Process tag type	Analog		

## PIC01\_MV

Name	PIC01_MV	Process tag	PIC01_DB_Merena_hodnota_ing
Process tag type	Analog		

## PIC01\_SP

Name	PIC01_SP	Process tag	PIC01_DB_Setpoit_PID
Process tag type	Analog		

## PIC01\_OUT

Name	PIC01_OUT	Process tag	PIC01_DB_Vystup_PID
Process tag type	Analog		

## PIC02\_MV

Name	PIC02_MV	Process tag	PIC02_DB_Merena_hodnota_ing
Process tag type	Analog		

## PIC02\_SP

Name	PIC02_SP	Process tag	PIC02_DB_Setpoit_PID
Process tag type	Analog		

## PIC02\_OUT

Name	PIC02_OUT	Process tag	PIC02_DB_Vystup_PID
Process tag type	Analog		

Totally Integrated Automation Portal		
<div>PorologPM6-HMI [KTP700 Basic PN] / Historical data</div> <div>AlarmLogs</div> <div>This folder is empty.</div>		

Totally Integrated Automation Portal		
<div><div>PorologPM6-HMI [KTP700 Basic PN]</div><div>Scheduled tasks</div><div>This folder is empty.</div></div>		

# PorologPM6-HMI [KTP700 Basic PN] / Text and graphic lists

## Text lists

### TextList\_OriginalScreenNames

Name	TextList_OriginalScreenNames	List range	Value/Range
Comment			

Value: 1

Entry type	Single value	Text	Root screen
------------	--------------	------	-------------

### TextList\_ScreenNames

Name	TextList_ScreenNames	List range	Value/Range
Comment			

Value: 1

Entry type	Single value	Text	Root screen
------------	--------------	------	-------------

### Volba\_provozu

Name	Volba_provozu	List range	Bit (0, 1)
Comment			

Value: 0

Entry type	Single value	Text	Provoz bez pomocné zóny
------------	--------------	------	-------------------------

Value: 1

Entry type	Single value	Text	Provoz s pomocnou zónou
------------	--------------	------	-------------------------

**PorologPM6-HMI [KTP700 Basic PN] / Text and graphic lists**

**Graphic lists**

This folder is empty.

PorologPM6-HMI [KTP700 Basic PN] / User administration

User

Administrator

Name	Administrator	Number	1
Automatic logoff	Enabled	Logoff time	5
Groups	Administrator group;		



PorologPM6-HMI [KTP700 Basic PN] / User administration

Groups

Administrator group

Name	Administrator group	Display name	Administrator group
Number	1	Authorizations	User administration; Monitor; Operate;

Users

Name	Users	Display name	Users
Number	2	Authorizations	Operate;

## PorologPM6-HMI [KTP700 Basic PN] / User administration

### Authorizations

#### Monitor

<b>Name</b>	Monitor	<b>Authorization</b>	Monitor
<b>Authorization number</b>	2		

#### Operate

<b>Name</b>	Operate	<b>Authorization</b>	Operate
<b>Authorization number</b>	3		

#### User administration

<b>Name</b>	User administration	<b>Authorization</b>	User administration
<b>Authorization number</b>	1		